



ON-SITE TRAINING



Restore Confidence in Your Plant

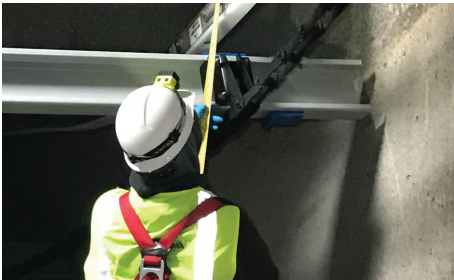
Many facilities experience maintenance procedure changes as a result of staff turnover. Whether personnel lack knowledge of system history, are unfamiliar with Polychem equipment, or are missing documentation of O&M manuals, Brentwood seeks to remedy these issues by offering a mix of classroom and in-tank training opportunities through our Polychem Solutions On-Site Training Program. Through this program, Brentwood can supply training on any type of system - from metallic stationary shaft systems to 100% non-metallic systems. Properly training personnel will instill a peace of mind among plant staff and allow them to properly maintain their system, troubleshoot problems, and self-diagnose potential issues in the future.





Understaffed or Lack of Experienced Personnel

Training personnel on proper operation, inspection, and maintenance procedures will result in improved operational functioning of chain and flight clarifiers. Brentwood can supply training on any system – from metallic stationary shaft styles to 100% non-metallic styles. Brentwood is the only chain and flight manufacturer that has supplied systems in this broad of a variety of mechanisms, enabling training to be tailored to your specific system.



On-Site Tank Modifications and Non-OEM Equipment

A common issue among water and wastewater treatment plants is inconsistent maintenance, resulting in equipment that has deviated from the original installation, often from non-OEM suppliers. Mixed equipment typically leads to higher maintenance intervals, substandard performance, and frequent failures. Returning equipment to original specification is only part of the solution. Operation with non-spec equipment often produces excessive wear characteristics or misalignments that must be corrected. Brentwood can assist with formulating a corrective action plan to return your system to proper performance.



Unfamiliarity with System Components

Due to the slow movement of rectangular clarifiers, they often go unnoticed as a mechanical system until catastrophic failure occurs. This can result in extended downtime, permit violations, and expensive unbudgeted repairs. Brentwood provides comprehensive system-wide training that includes a complete familiarization of all parts in your system. Understanding the relationship between all functioning parts is fundamental to implementing a proper maintenance routine.



No Periodic or Preventative Maintenance

Because chain and flight collection systems are primarily submerged, they often get overlooked in regard to periodic maintenance. It is also possible for the above-ground drive to be overlooked or improperly maintained. Although no part of the equipment requires daily maintenance, it does need periodic maintenance to improve life cycle. Planned preventative practices increase equipment longevity and reduce risk of catastrophic failure.



Missing Documentation of O&M Manuals

Aging facilities may result in office relocation, causing original maintenance and operation manuals to get lost in the process. If your system was originally furnished with Polychem equipment, there may be record of original manuals that can be reproduced. If the system was provided by an alternate vendor, even if the vendor is no longer commercially active, Brentwood can assist with the recreation of a maintenance plan. A full manual may not be available, but developing an installation-specific plan can improve reliability and help resolve financial planning issues regarding inventory and parts replacement.



BRENTWOOD INDUSTRIES, INC.
brentwoodindustries.com
water@brentw.com

